

JetStream VMS

SUMMARY

JetStream Video Surveillance system allows transparent access and accompanying services to cameras with multi-tenancy user domain.

The solution provides temporary and properly protected access of the System Administrative and Support personnel to the individual Realms for the end-customers support.



Top-level Functionalities for Customer Device & Data Management:

- Managing the cameras, archival and on-demand delivery.
- Managing camera settings and position.
- Events and Alerts generation using Video Analytics and Rules.
- Video and Events data archival with subscription and on-demand delivery to the end clients.
- Providing the “best possible level of service” guarantees fluctuating network connectivity and availability conditions with extensive prioritization and queueing support for data delivery in the “eventual consistency” model.
- Providing data access over Web Browsers, Desktop applications, and Mobile Applications.
- Presenting Video and Events/Alerts via scalable Video Wall[s].
- Flexible Role-Based Access Controls for the Customer to define their own access rules.

EVENT VIDEO

Drag and drop events from the Events widget to the Event Video widget to see a video preview of the event that happened

DEVICE LIST

Contains all the devices in the realm.
Can be used to drop devices into Camera Live Viewer or Archive Viewer

TIMELINE

Used in conjunction with the Archive Viewer widget. Gives more playback controls to easily navigate the video archive

IMAGE MAP

With the Image Map Widget, it is easy to visualize where all cameras are using different types of main and alternative map images

GEO MAP

Displays devices with a location linked on a map

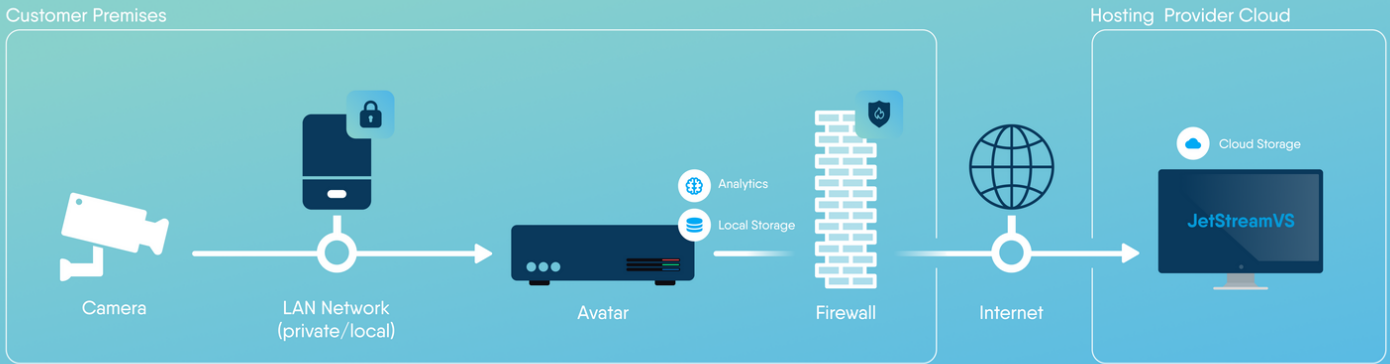
DOWNLOAD MANAGER

Displays downloadable video clips from selected cameras

VMX (VIRTUAL MULTIPLEXER)

sets up monitors that are displayed on a separate display server. VMX is a DS (Display Server) interface that includes Walls and Monitors. You can select the Wall - for the wall, specify / select the Monitor (s) and for the Monitor (s), specify / select the splitting into cells (Split) for the required number of cameras.





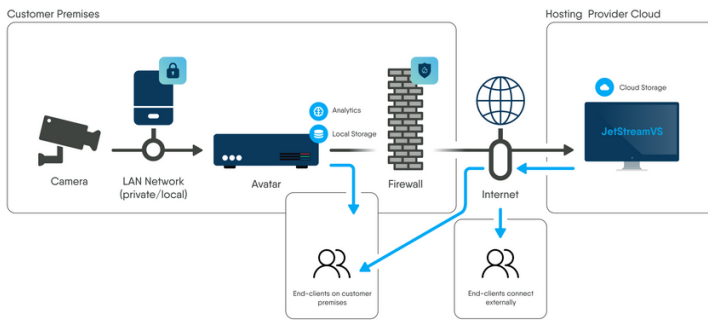
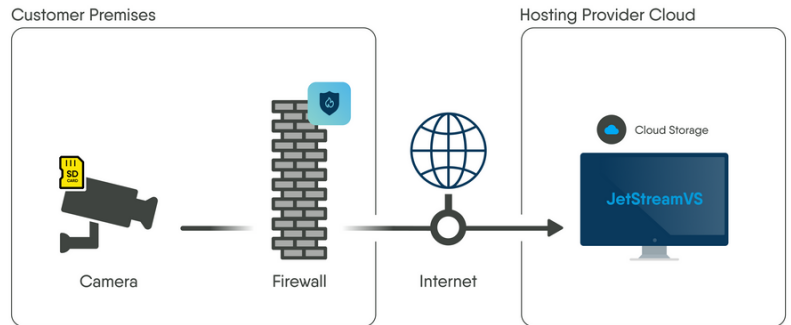
VSAAS REFERENCE USAGE SCENARIOS

Video Retrieval from Cameras

When the video is collected from the camera into the edge-local video appliance called "Avatar" and then processed and pushed to the Cloud as defined by the Delivery Strategy:

Video Retrieval from Camera into the Cloud

When the video is getting delivered directly from the Camera into the Cloud VSaaS (the "CloudDirect" option in JetStreamVS terms)



Content Delivery from Edge to Cloud and to End-Users

The "CloudDirect" option is very straight-forward, as 100% of the video gets delivered to the Cloud before any end clients will be able to consume it, as well as 100% of the video consumed by end clients always originates from the Cloud

The Avatar enables the transparent Camera publishing into VSaaS from the Customer Premises with no special configuration on the Firewall and serves as an interim buffering and local video stream delivery endpoint, substantially reducing the bandwidth utilization by the end-clients connected over the Local Network (LAN).

